

Minarets High School Master Planning

Steering Committee Update

April 24, 2007



What we have done



- Kickoff
- Data gathering
- Internal Environmental Scan
- External Environmental Scan
- Analysis
- Community meetings
- Online questionnaire
- Research on innovative high school models
- Workshops to formulate model academic programs

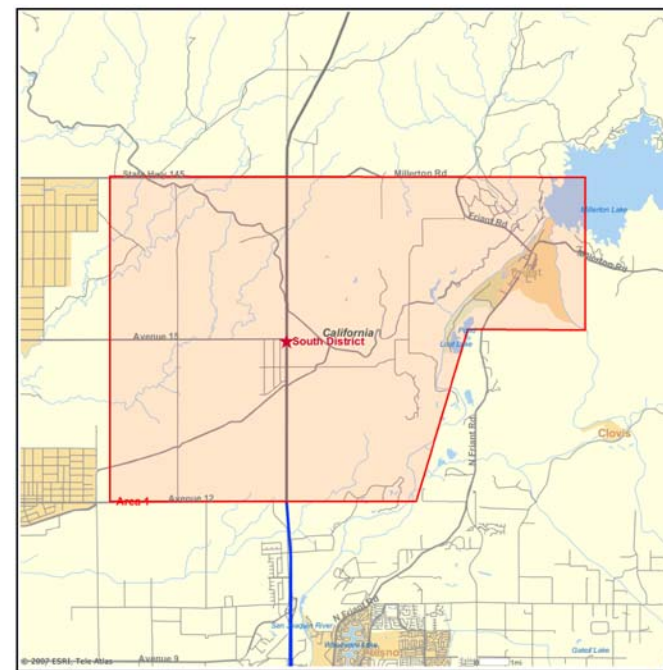
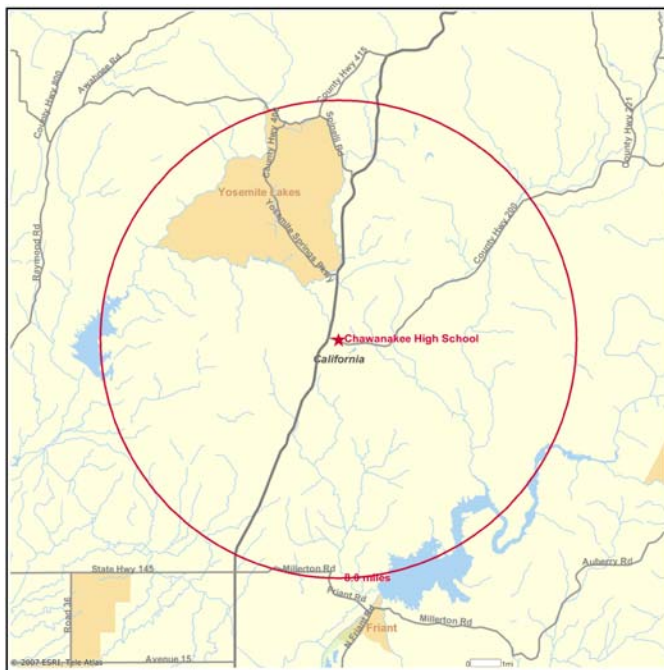
What we are working on



- Continued research on innovative school models
- Develop an academic program that meets the community's needs
- Develop enrollment projections
- Fiscal analysis
- Phasing plan
- Marketing plan
- Recommendations
- Draft Plan

District Segmentation

- Divided district service area into two regions
 - North-District
An 8-mile radius around MHS
 - South-District
(south of CA-145)

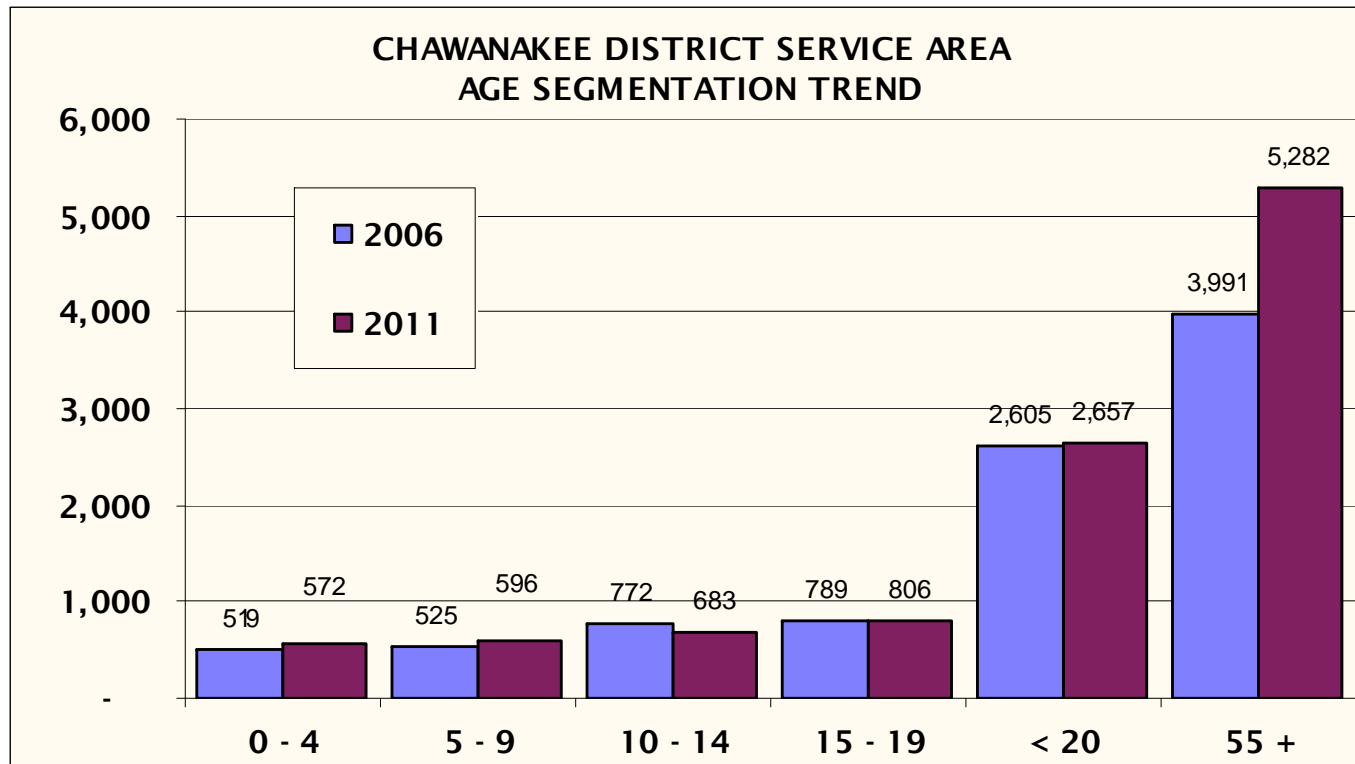


Population Growth Rate

Chawanakee School District - Population Growth		
	Pop Growth	Median Age
North District	3.00%	47.0
South District	2.21%	44.8
Madera County	2.88%	32.7
State of California	1.55%	33.3
United States	1.30%	35.3

Source: ESRI

Age Segmentation



Regional Occupation Growth

OCCUPATIONS WITH FASTEST GROWTH (2002-2012)

Occupation	% Growth	Median Hourly Wage	Education and Training Levels
Respiratory Therapists	62.2%	\$23.00	AA DEGREE
Cement Masons and Concrete Finishers	55.0%	\$16.59	12-Mo. On the Job Training
Medical Transcriptionists	50.0%	\$14.11	POST-SEC VOC-ED
Tapers	50.0%	\$18.10	1-12 Mo. On the Job Training
Medical Assistants	49.6%	\$11.09	1-12 Mo. On the Job Training
Home Health Aides	48.6%	\$8.17	30-Day On the Job Training
Carpenters	47.6%	\$21.95	12-Mo. On the Job Training
Construction Laborers	47.5%	\$11.58	1-12 Mo. On the Job Training
Plumbers, Pipefitters, and Steamfitters	46.7%	\$15.79	12-Mo. On the Job Training
Operating Engineers & Other Constr Equip Operators	46.3%	\$20.33	1-12 Mo. On the Job Training
Medical Records and Health Information Technicians	44.7%	\$12.90	AA DEGREE
Drywall and Ceiling Tile Installers	44.7%	\$18.74	1-12 Mo. On the Job Training
Tile and Marble Setters	43.5%	\$16.52	12-Mo. On the Job Training
Self-Enrichment Education Teachers	43.2%	\$19.76	WORK EXPER
Electricians	42.9%	\$19.38	12-Mo. On the Job Training
First-Line Supervisors/Managers of Constr Trades	42.6%	\$26.81	WORK EXPER
Security Guards	42.2%	\$8.31	30-Day On the Job Training

Source: California Employment Development Division Labor Market Information, data is for Fresno MSA (metropolitan Statistical Area) including Madera County

Community Input - Principles

- **Relationships**

- Minarets fosters strong relationships among students, teachers, staff, parents and community

- **Rigor**

- Minarets offers rigorous learning opportunities that stimulate students' curiosity, engage their imaginations and require their best efforts

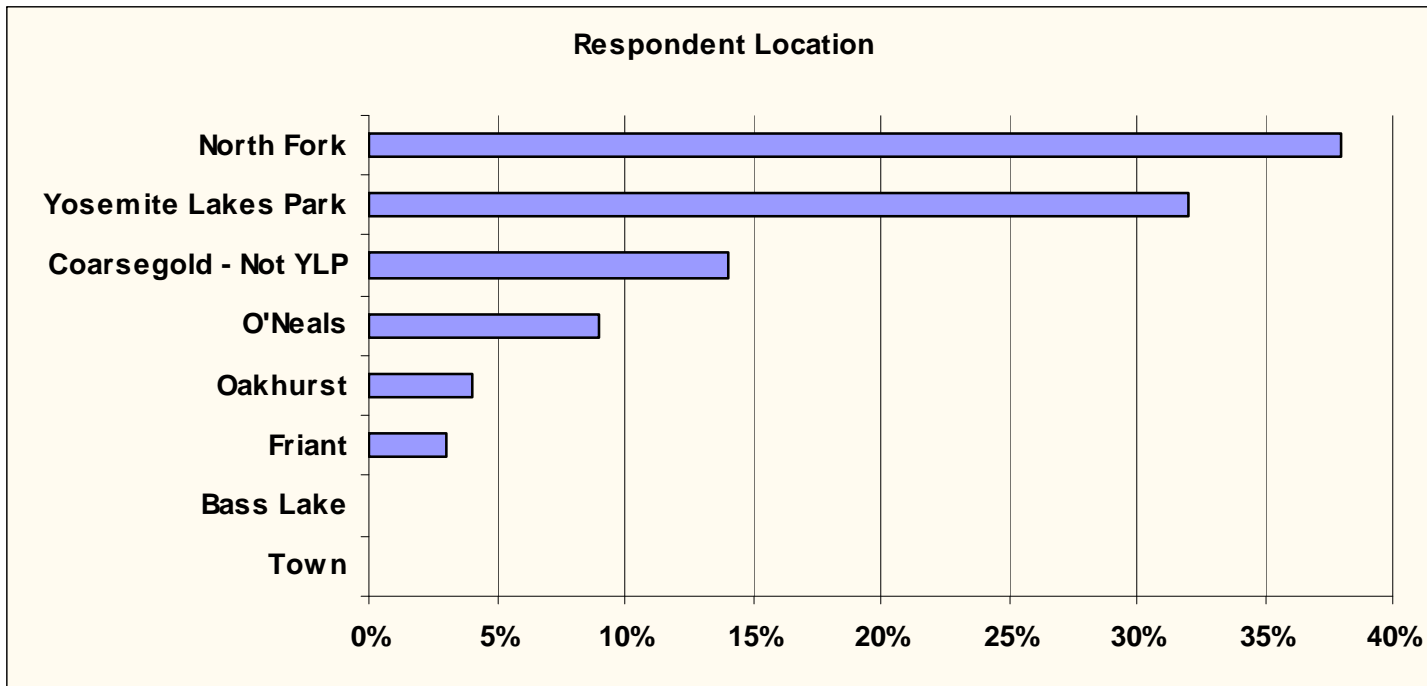
- **Relevance**

- Minarets connects students to the world around them through active, project-based learning

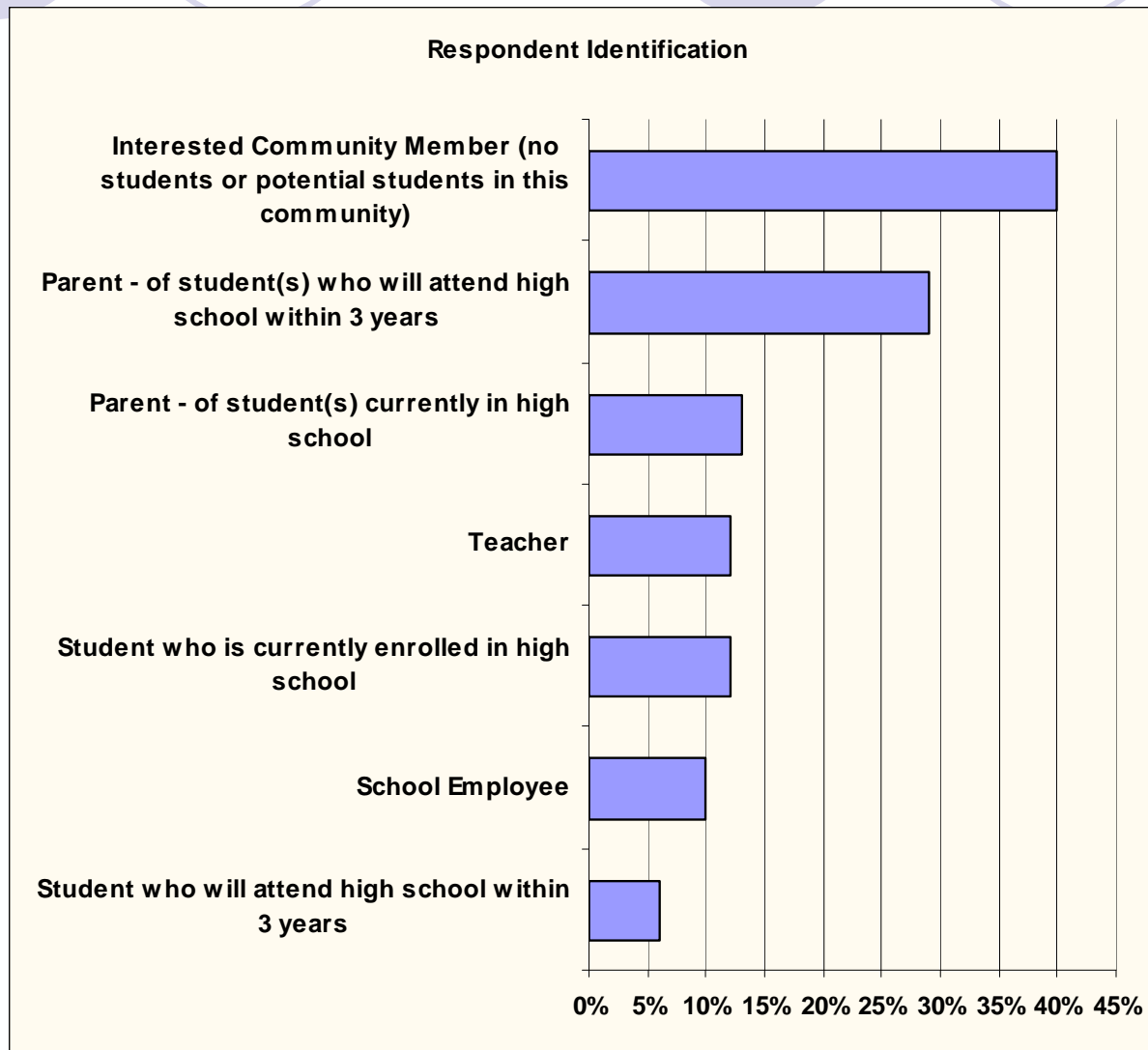
- **Celebration**

- Minarets offers programs that enhance students' desire to be in school and to participate in what the school offers

Survey Results – Where do you live?



Survey Results – Check all that apply.



What do you think the primary purpose of education (specifically H.S.) should be?

Develop reading, speaking, writing and numerical skills that will give students a sound foundation in the world.	88%
Coach students in how to solve problems and think critically.	79%
Prepare student for college entrance	79%
Stimulate Lifelong Learning	78%
Help students discover their passions and career interests.	74%
Give students opportunities to work independently and with others in a team environment.	73%
Provide opportunities for creative thinking.	73%
Stimulate students to explore and learn how to navigate the real world.	70%
Expose students to experiences and opportunities that will help them see the world in new ways.	67%
Provide experiences that help students develop integrity and self-respect.	67%

How important are the following to you?

Quality, availability and care given by teachers and staff	3.59
Academic preparation for college bound students	3.55
Career guidance and counseling programs	3.44
Student safety and citizenship	3.40
Individual attention for each student	3.39
Advanced placement programs	3.32
Classroom size	3.30
Availability of healthy food and snacks	3.10
Integration of school and community	3.03

Community Input - Program Elements

- Prepare students bound for college or career
 - AP courses
 - Career technical education
 - Career Pathways
- Make learning relevant
 - Practical Project-Based learning (relevant to their lives)
 - Partnerships
 - Project advisor
 - Majors – areas of focus
- Extra-curricular activities
 - Sports/athletics
 - Music/art/drama

Schedule

Meetings

	<u>Meeting Date</u>	<u>Time</u>
<i>Project Orientation Meeting with Executive Planning Team</i>	11/1/2006	11:00 a.m.
<i>Master Planning Presentation for Administration</i>	12/7/2006	9:00 a.m.
<i>Board Presentation: Master Planning Process</i>	12/11/2006	6:30 p.m.
<i>Project Update with Steering Committee</i>	1/17/2007	9:00 a.m.
<i>Presentation & Planning Forum at North Fork School</i>	2/5/2007	5:30 p.m.
<i>Presentation & Planning Forum at Spring Valley School</i>	2/5/2007	7:30 p.m.
<i>Project Update with Steering Committee</i>	2/13/2007	9:00 a.m.
<i>Planning workshop</i>	3/1/2007	6:00 p.m.
<i>Presentation & Planning Forum at Yosemite Lakes Park</i>	3/6/2007	7:00 p.m.
<i>Board Presentation: Status Report</i>	4/9/2007	7:00 p.m.
→ Project Update with Steering Committee	4/24/2007	9:00 a.m.
Draft of Plan to Steering Committee	TBD	
Presentation of Draft Plan at North Fork School	TBD	7:30 p.m.
Presentation of Draft Plan at Spring Valley School	TBD	5:30 p.m.
Final Plan Delivered to Planning Committee	6/21/2007	
Final Plan Presented to the Board	7/9/2007	6:30 p.m.

Perhaps May 24th or 31st?

To stay informed...



<http://minarets.maasco.com>

Email: info@maasco.com